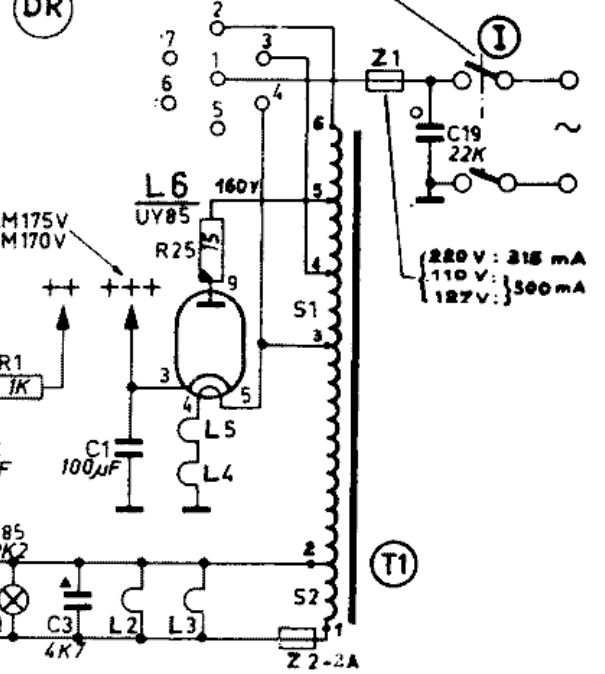
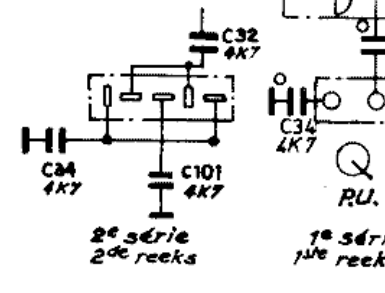
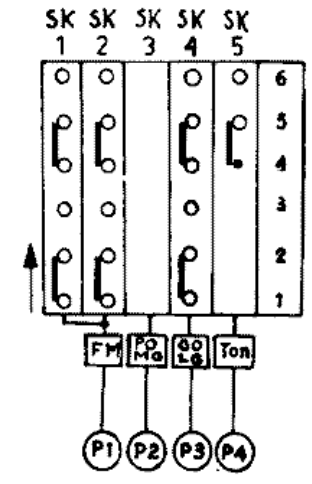
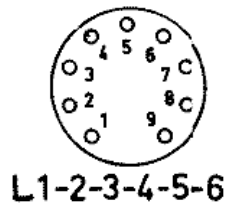
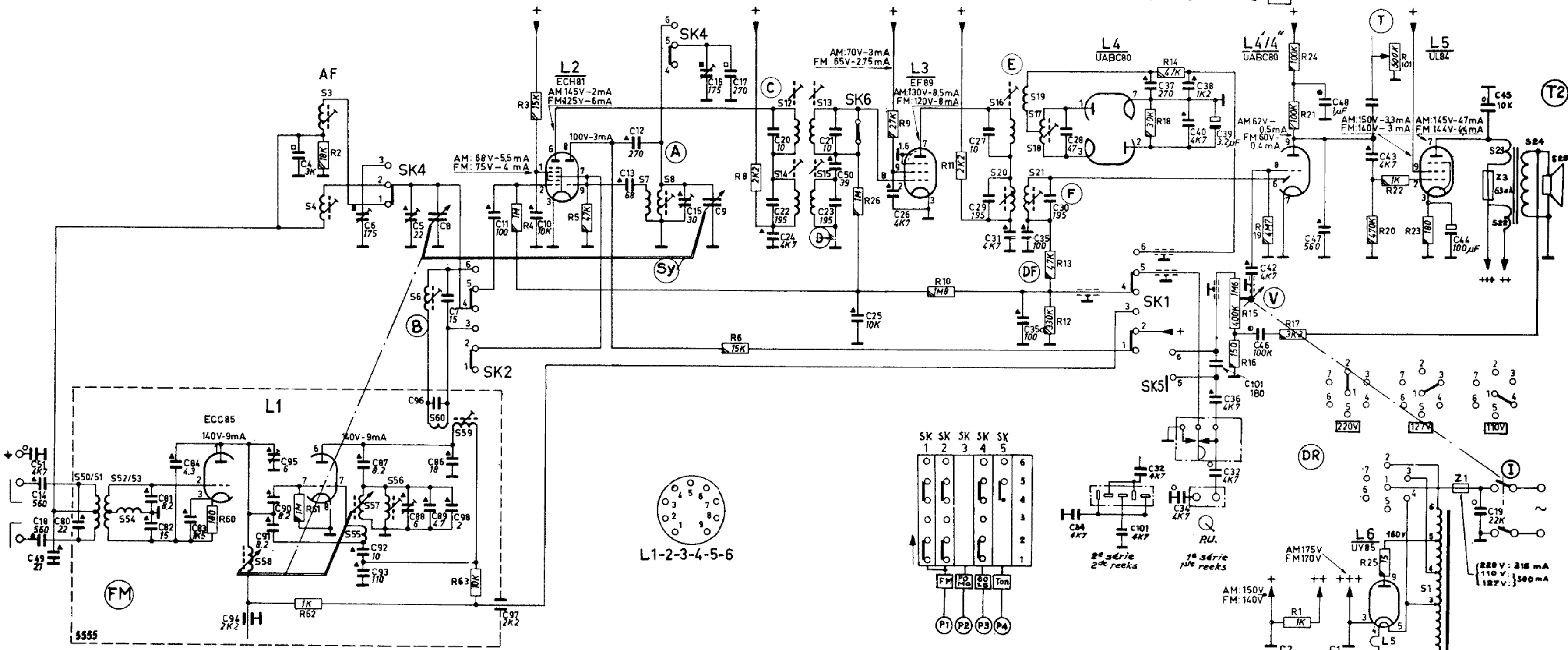
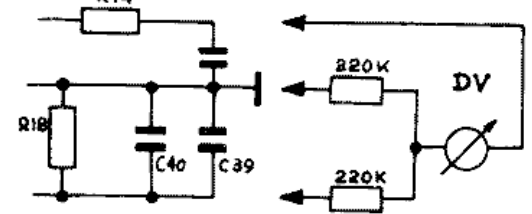


S	50. 51. 52. 53. 54.	58. 3.4.	55. 57. 56.	6. 60. 59.	7. 8.	12. 14. 13. 15.	16. 20. 19. 18. 21. 17.	1. 2.	23. 22. 24.
R	61. 62. 2.	63	4. 3.	5	6. 8.	26	9. 10. 11.	13. 12.	15. 16. 19. 24. 1. 21. 17.
C	51. 14. 18. 4. 9. 80.	81. 82. 84. 83.	94.	95. 90. 91. 4.	6. 87. 92. 93.	5. 88. 89. 8. 86. 98. 96. 7. 60. 97. 11. 10.	13. 12.	15. 9. 16. 17.	20. 22. 24.
									21. 23. 50. 25. 26.
									27. 29. 31. 35. 30. 28. 35a.
									34. 37. 38. 40. 39. 36. 32. 42. 46. 2. 85. 48. 47. 1. 41. 3. 43.
									44. 45. 19.

Câblage pour l'alignement FM (voir Servicing)
Bedrading voor de FM afregeling (zie Servicing)



Radio ACEC 5105

- 1W 10% — 1/2W 1% — Bob. 0.5% Geop. — 1/2W 10% — Cér. — Mica
- Papier — Polyester — Pap. blindé (geblinderd) — Trimmer fil draad — Trimmer air Lucht — Cér. (parie) (parelv.)

